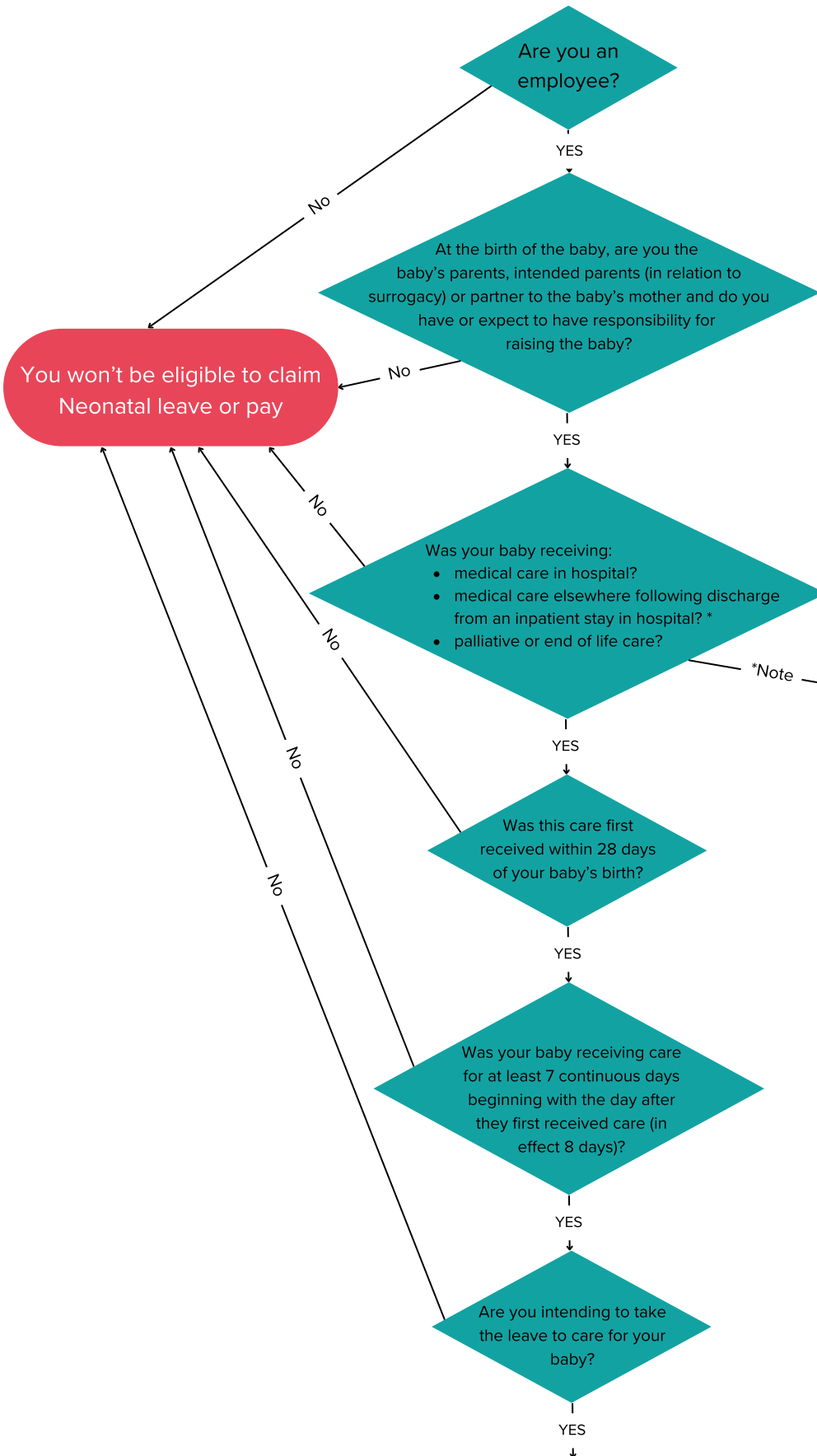


Neonatal Care Leave

Note that Neonatal Care Leave only applies for babies born on or after 6 April 2025



* The care must be under the direction of a consultant and includes ongoing monitoring and visits to the child by healthcare professionals.

You will be eligible to take Neonatal Leave. Eligible parents can take one week's Neonatal Care Leave for each uninterrupted week (7 days) that your baby receives neonatal care. The maximum amount of leave is 12 weeks.